

PLAT OF THE CHARTER CLUB AT MARTIN DOWNS.

BEING PLAT NO. 27 MARTIN DOWNS P. U. D.
SITUATE IN SECTION 18, TOWNSHIP 38 SOUTH, RANGE 41 EAST
MARTIN COUNTY, FLORIDA.

DECEMBER, 1987.

SW MARTIN DOWNS BLVD. (200' WIDE R/W O.R.B. 46, PG. 399)
(FORMERLY MASSEY BLVD.)

SOUTHERLY RIGHT-OF-WAY LINE 589°31'06"E 1642.01'

GRAPHIC SCALE:
1" = 50'

0 50 100 150 200 250 FEET.

N.W. CORNER
SECTION 18/38/41.

P.O.C.

STATE OF FLORIDA
COUNTY OF MARTIN SS.

CLERK'S RECORDING CERTIFICATE

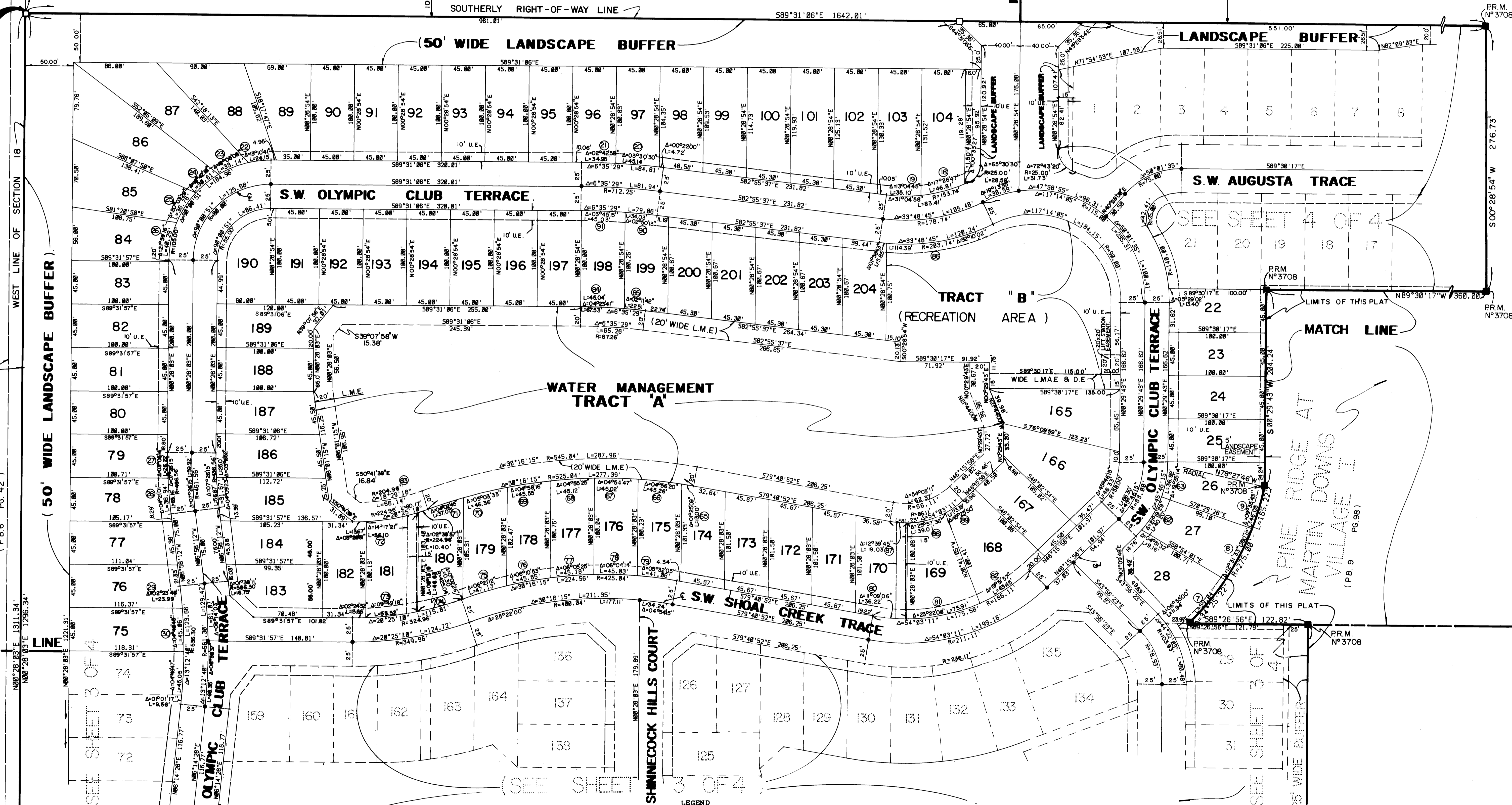
I, MARSHA STILLER, CLERK OF THE
CIRCUIT COURT OF MARTIN COUNTY,
FLORIDA, HEREBY CERTIFY THAT
THIS PLAT WAS FILED FOR RECORD IN
PLAT BOOK

11, PAGE 15,
MARTIN COUNTY, FLORIDA, PUBLIC
RECORDS, THIS DAY OF
1988.

MARSHA STILLER,
CLERK
CIRCUIT COURT
MARTIN COUNTY, FL.
BY: _____
DEPUTY CLERK

FILE NO. _____

P.O.B.



SEE SHEET 3 OF 4

(SEE SHEET 3 OF 4)

SEE SHEET 4 OF 4

PINE RIDGE AT
MARTIN DOWNS I
VILLAGE I
(P.B. 9 PG. 98)

- LEGEND
- - DENOTES (PRM) PERMANENT REFERENCE MONUMENT (SET)
 - - DENOTES (PRM) PERMANENT REFERENCE MONUMENT (FOUND)
 - - DENOTES P.C.P. (PERMANENT CONTROL POINT)
 - D.E. - DENOTES DRAINAGE EASEMENT
 - L.M.A.E. - DENOTES LAKE MAINTENANCE ACCESS EASEMENT
 - U.E. - DENOTES UTILITY EASEMENT
 - L.M.E. - DENOTES LAKE MAINTENANCE ACCESS EASEMENT

P.O.C. - DENOTES POINT OF COMMENCEMENT.
P.O.B. - DENOTES POINT OF BEGINNING.

THIS INSTRUMENT PREPARED BY R.W. LEE FOR

SHALLOWAY INC.
DATE 7-13-87
DRAWN A.R.
CHECKED G.R.

JOB: 87025
SHEET 2
OF 4